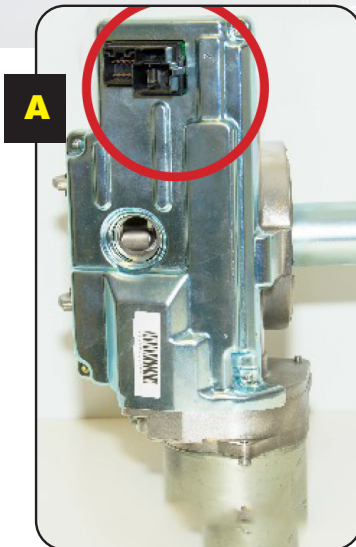
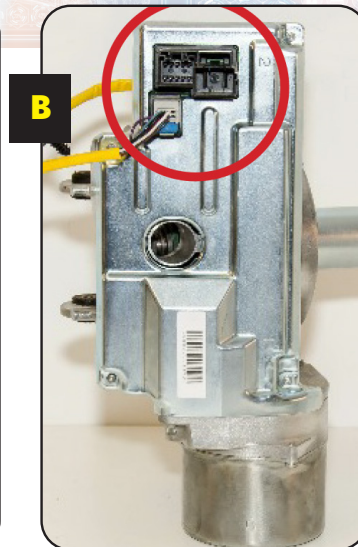
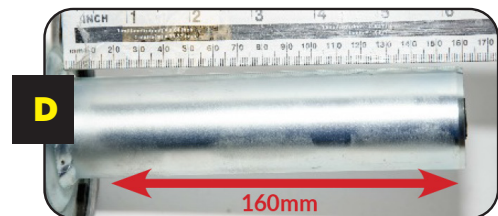
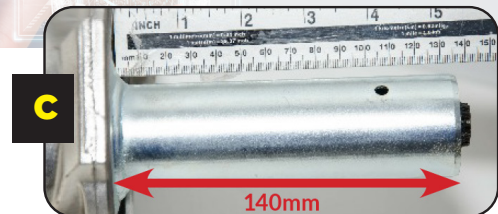


Identification Breakdown Chart
IMPORTANT MESSAGE
1. Check for Internal or External Sensor


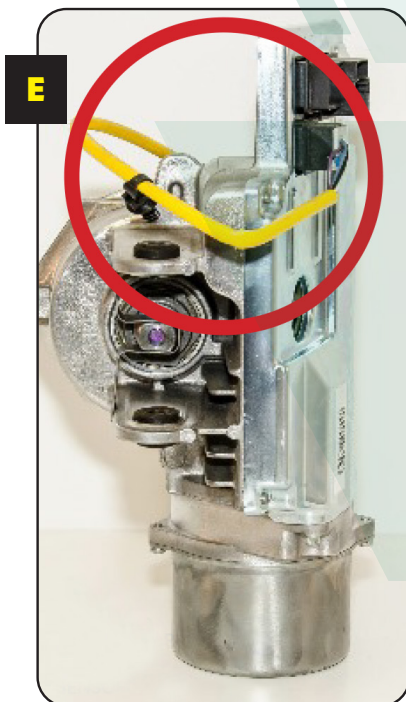
**2 PLUG BLOCKS =
INTERNAL SENSOR.**



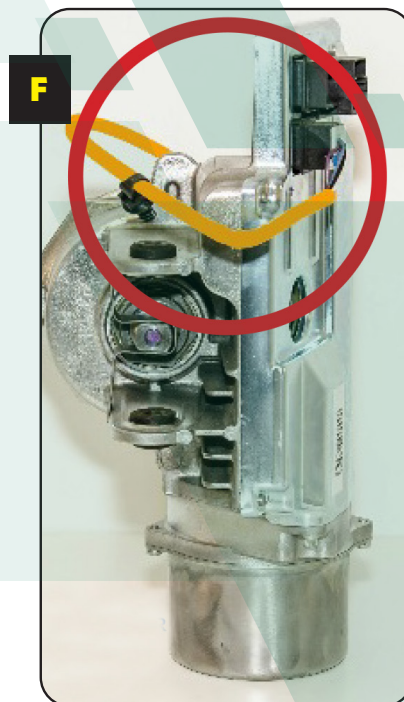
**3 PLUG BLOCKS =
EXTERNAL SENSOR.**

2. Check for Shaft Length


Shaft length will be either
140mm or 160mm.

3. Check Sensor Sleeve Colour


**YELLOW SENSOR SLEEVE
WIRES SENSOR.**



**ORANGE SENSOR SLEEVE
WIRES SENSOR.**



IMPORTANT

- **OPTION 1**
A+C = CS-72020
(internal sensor
+ 140mm shaft).
- **OPTION 2**
A+D = CS-72009
(internal sensor
+ 160mm shaft).
- **OPTION 3**
B+C+E = CS-72011
(external sensor
+ 140mm shaft
+ yellow sleeve 6 wire).
- **OPTION 4**
B+D+E = CS-72004
(external sensor + 160mm
shaft + yellow sleeve 6 wire).
- **OPTION 5**
B+D+F = CS-72005
(external sensor + 160mm
shaft + orange sleeve 7 wire).